



## Attention

Do not allow the conductive garments to touch together when turning on or making adjustments to the intensity of the ReBuilder® unit.

It is important to carefully un-snap the lead wire from the conductive garment after use. Dry the snap connectors and the snaps on the garments before putting them away. Doing this will help maintain optimal function of the conductive garments.



Even if you have used Conductive Socks before, please read these instructions completely as information may have changed.

## Questions

For questions about this product



Contact us toll-free (866) 725-2202



Visit us on the Web  
[www.ReBuilderMedical.com](http://www.ReBuilderMedical.com)



Or email us  
[help@ReBuilderMedical.com](mailto:help@ReBuilderMedical.com)

## Warranty Information

Conductive Socks carry a 90 day warranty against manufacturer defects. All warranty claims are to be processed by the manufacturer directly and must be accompanied by a receipt for purchase or copy of a dated order to dispense by a certified physician's office.

DO NOT RETURN THIS ITEM TO YOUR DOCTOR FOR WARRANTY RELATED ISSUES.

Contact ReBuilder Medical for all warranty claims  
(877) 717-54878.



636 Treeline Drive  
Charles Town, WV 25414  
Toll Free: (877) 717-5487  
Phone: (304) 725-2202  
Fax: (304) 699-0055  
V030617



## Universal Conductive Garment Socks

For use with Electrical Stimulators



General Description  
Instructions  
and Warranty Information

Please read all information in this booklet before beginning treatment with the Conductive Socks.

Verify contents of your package:

- A. Conductive Garment Socks with attached snap connectors
- B. Electrolyte



## Using the Conductive Socks

1. Turn the Conductive Socks inside out
2. Holding the Electrolyte bottle about 6 inches away, spray each Conductive Sock.
3. Apply the Electrolyte evenly across the entire Conductive Sock until fabric is moist.
4. Turn the Conductive Socks right-side out.
5. Repeat spray to the Conductive Socks as necessary to maintain desired moisture level for your treatments.

## Putting on the Conductive Socks

Roll the socks on your feet from the toes up. To reduce stretching, try to avoid “pulling” the socks on.



## Connecting the snaps

Snap connectors will be connected to the Conductive Socks. Attach the lead wire from the stimulator into the snap connector. (See fig. 1) You can remove the snaps if it makes it easier to attach the lead wire. (See fig. 2)



It does not matter if the snap is on the inside or the outside of your ankle.

Color of snap may vary.

## How to position your feet using the Conductive Socks

Elevate your feet in a recliner or ottoman, but do not let the conductive socks touch each other. If the socks touch, then the stimulator signal will not travel through your nerves.

## Connecting to the stimulator

Attach your existing lead wire into the top of your stimulator.

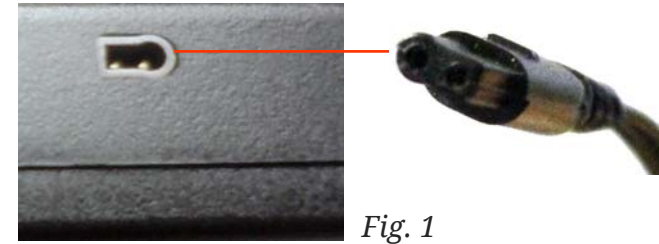


Fig. 1

Insert the metal prongs of the lead wire into each of the snap connectors.



Fig. 2

## Care and Cleaning

Your Conductive Socks are intended to be used wet. It is suggested you gently hand wash the Conductive Socks with mild soap once a week or as necessary. Do not machine wash or dry.

These products are supplied as extra products for your convenience. Many physicians will recommend these garments with use of electrical stimulation devices. These garments may assist in the treatment for pain but are not necessary for use with ReBuilder products.